










Legende

-  Gemeindegebietsgrenze
-  Quellen
-  Fließgewässer (permanent/temporär)
-  Stillgewässer
-  festgesetztes Überschwemmungsgebiet
-  Wasserschutzgebiet mit Schutzzonen (I - III)
-  Wassersensible Bereiche
-  Ludwig-Donau-Main-Kanal
-  Main-Donau-Kanal

Datenquelle: © Bayerische Landesamt für Umwelt 2016
Vergrößerung: Maßstab 1:25.000
Geobasisdaten © Bayerische Vermessungsverwaltung 2016

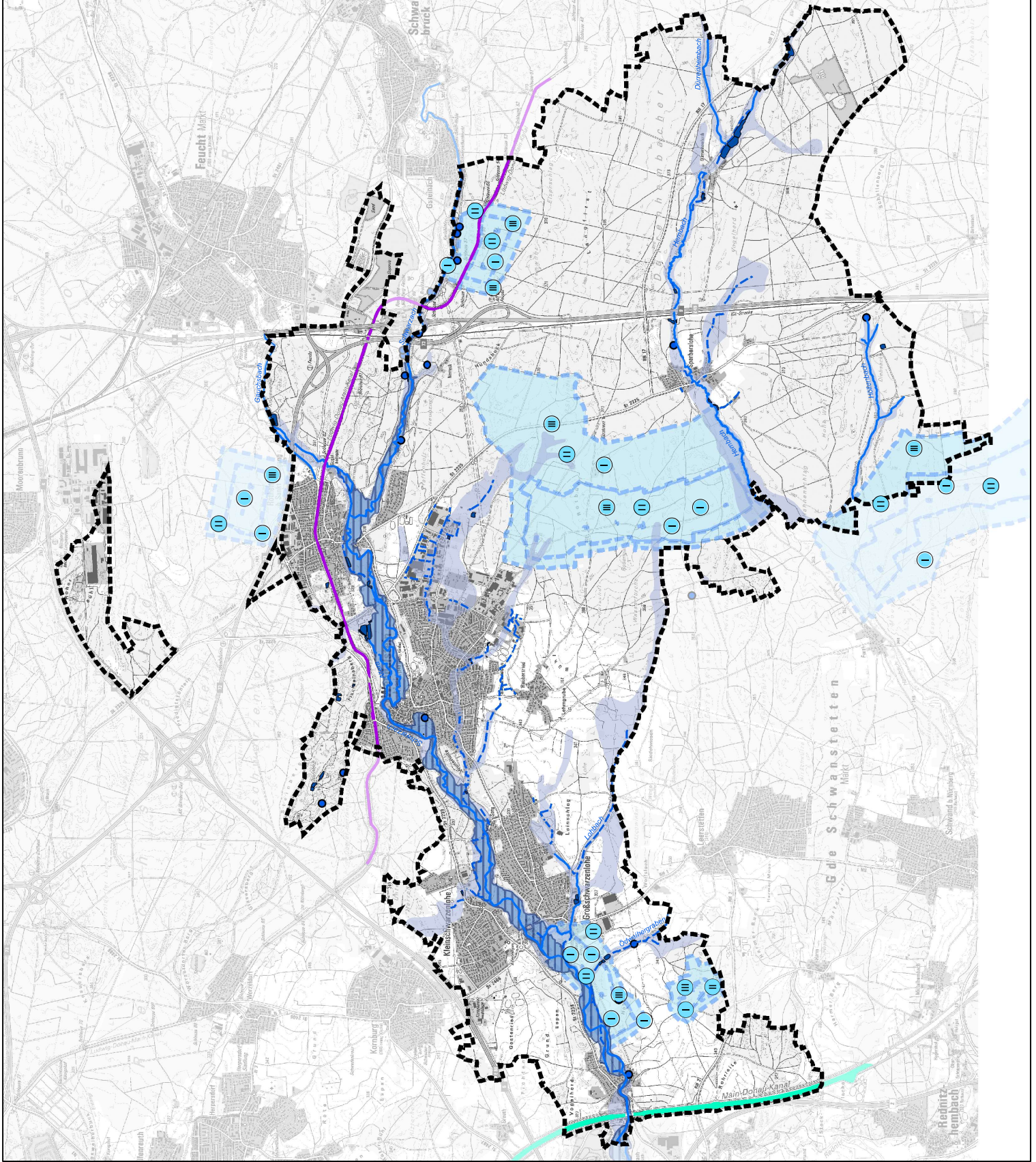
MARKT WENDELSTEIN FLÄCHENNUTZUNGS- UND LANDSCHAFTSPLAN

Wasser

maßstab: 1: 40.000
datum: Januar 2017

bearbeitet: gb/jk/ih
ergänzt:

TEAM 4 Bauernschrömm • Enders
Landschaftsarchitekten + Stadtplaner PartGmbH
90491 Nürnberg Gedenkgasse 65
www.team4-planning.de
tel 0911/93957-0 fax 3357-99
info@team4-planning.de



6